



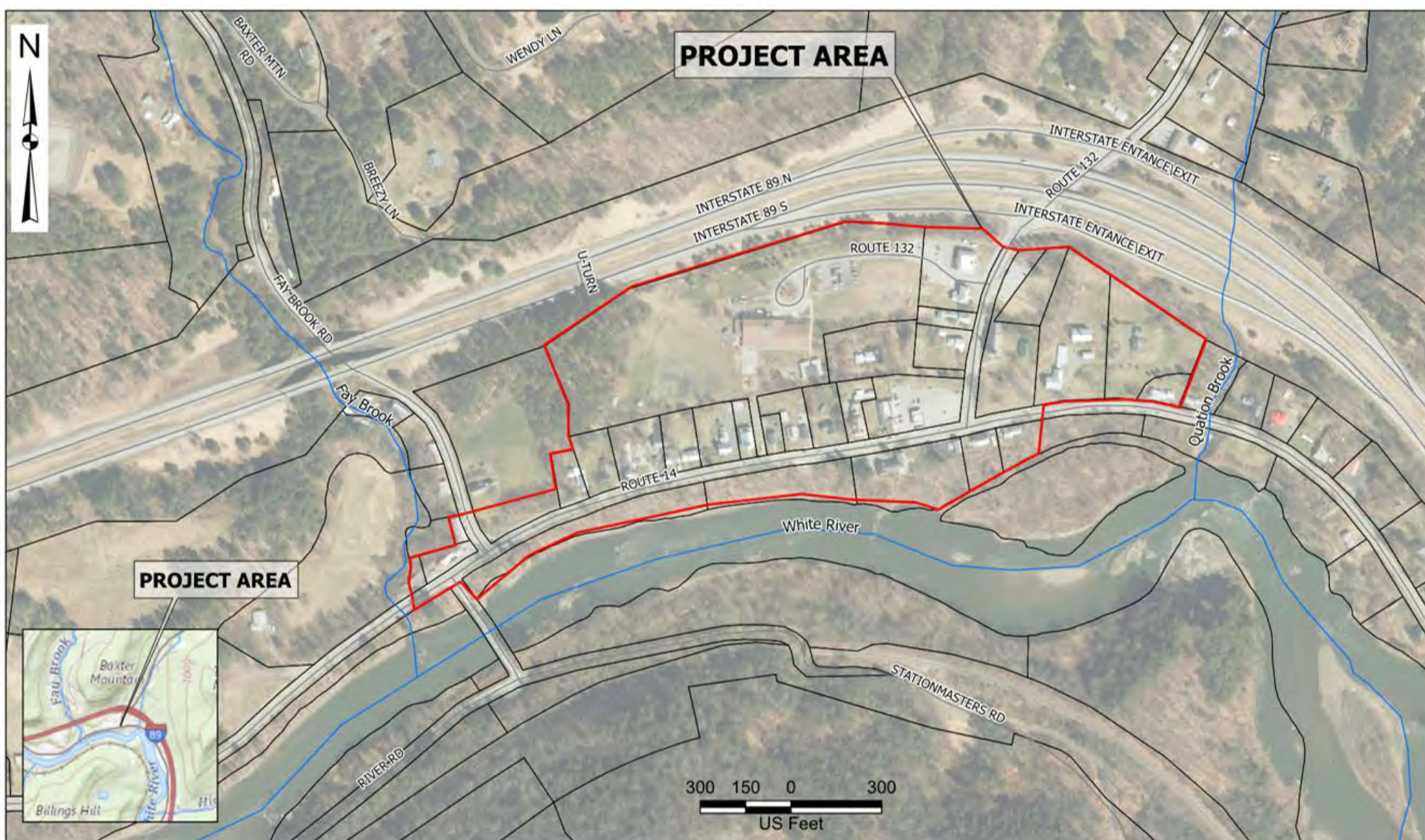
Sharon, VT Project Definition

Sharon TAP TA23(8)

Alternatives Presentation Meeting

Presented by: Nicole Fox, PE
October 21, 2024

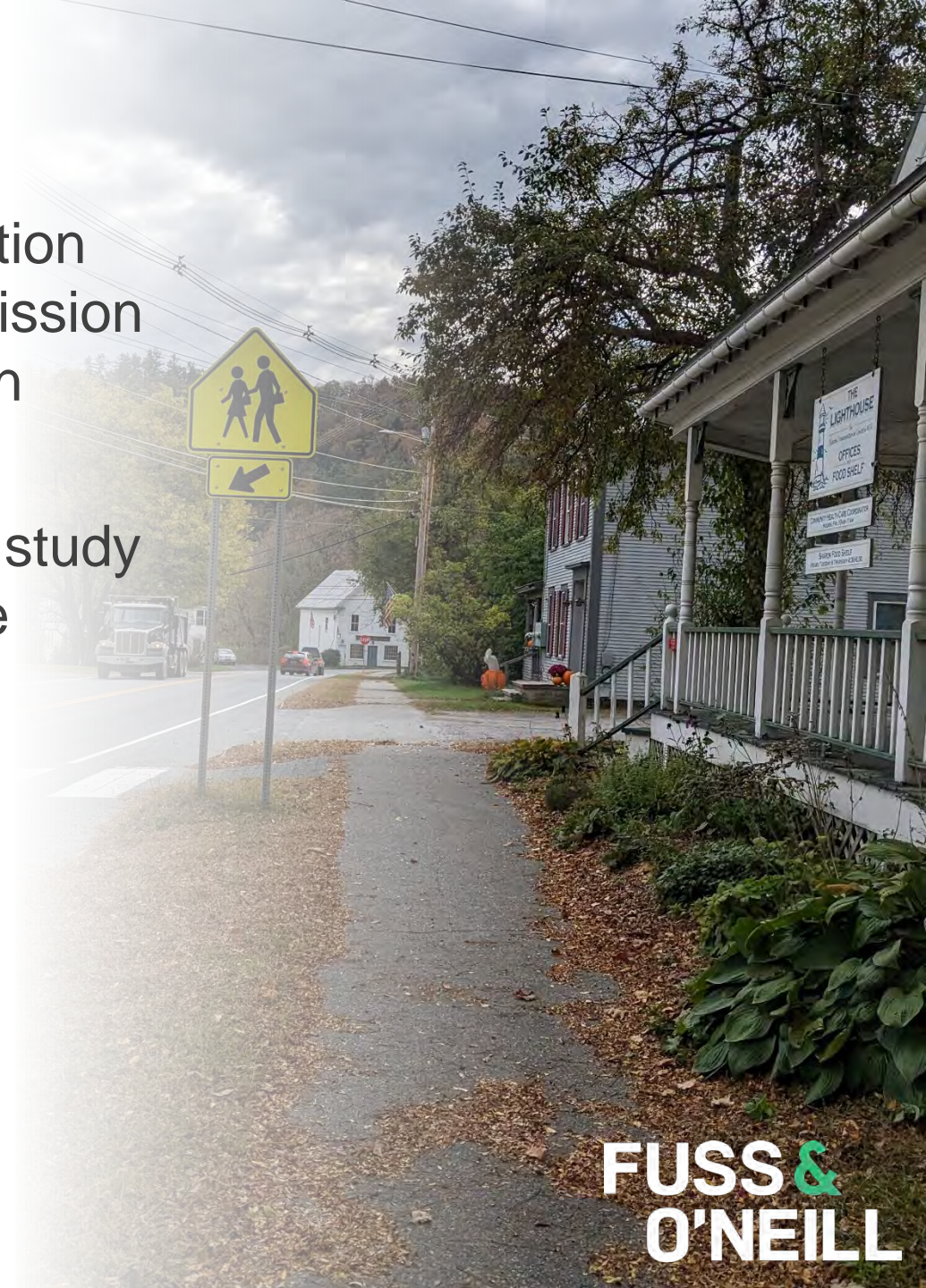
Path: K:\P\2023\0005\S01\MXD\2023005\S10_BaseMap.aprx Layout Name: Figure 2 Map Name:
Date Exported: 10/26/2023 10:30 AM User: LCromer Date Saved: 10/26/2023 10:25 AM



<div><div><div><div><div></div><div>Stream/River</div></div><div><div></div><div>Road</div></div></div><div><div><div></div><div>Project Area</div></div><div><div></div><div>Parcel Boundary</div></div></div></div></div>	<p>Disclaimer: This map is not the product of a Professional Land Survey. It was created by Fuss & O'Neill, Inc. for general reference, informational, planning and guidance use, and is not a legally authoritative source as to location of natural or manmade features. Proper interpretation of this map may require the assistance of appropriate professional services. Fuss & O'Neill, Inc. makes no warrantee, express or implied, related to the spatial accuracy, reliability, completeness, or currentness of this map.</p>	<div><div><div><div><div></div><div>FUSS & O'NEILL</div></div><div><div>205 Billings Farm Rd</div><div>White River Junction, VT 05001</div><div>802.698.0370 www.fundo.com</div></div></div></div></div>	<div><div><div>PROJECT BASE MAP</div><div>Sharon Village Sidewalk</div><div>Scoping Study</div></div></div>		<div>PROJ. No. 20230005.S01</div>
					<div>DATE: OCTOBER 2023</div>
			<div><div>SHARON</div><div>VERMONT</div></div>		<div>FIGURE 1</div>

Background

- Town of Sharon initiated the project in collaboration with Two Rivers-Ottauquechee Regional Commission (TRORC) and Vermont Agency of Transportation (VTrans)
- Town hired Fuss & O'Neill to conduct a scoping study for the Village to improve pedestrian and bicycle mobility and safety
- Study is following VTrans' Project Development Process for Project Definition



Project Team

- Rita Seto, AICP – TRORC, Municipal Project Manager
- Nicola Shipman – Town of Sharon
- Derek Kenison – VTrans Project Manager
- Nicole Fox, PE – Fuss & O'Neill Project Manager
- Jacob Fowler, EIT – Fuss & O'Neill Project Engineer



Alternatives Presentation Meeting Overview

- Review project development process
- Discuss alternatives developed for pedestrian accessibility
- Gather feedback on alternatives
- Solicit endorsement of Preferred Alternative

Project Development Process

1. Project Definition
2. Project Design
3. Construction



Project Definition

1. Data Collection
2. Local Concerns Meeting
3. Purpose and Need Statement
4. Alternatives Development
5. Alternatives Presentation Meeting and Acceptance
6. Scoping Report and Concept Designs



Project Schedule

- Kickoff Meeting – October 2023
- Local Concerns Meeting – November 2023
- Alternatives Presentation Meeting – October 2024
- Draft Scoping Report – November 2024
- Final Scoping Report – January 2025



Purpose and Need Statement

Purpose

To develop, design, and implement improvements to increase the safety and mobility of pedestrians and bicyclists, and increase areas to be safely accessed by these users.

Need

- Defined and ADA compliant sidewalks and crosswalks
- Reduce vehicle speeds to make walking and biking safer



Alternatives

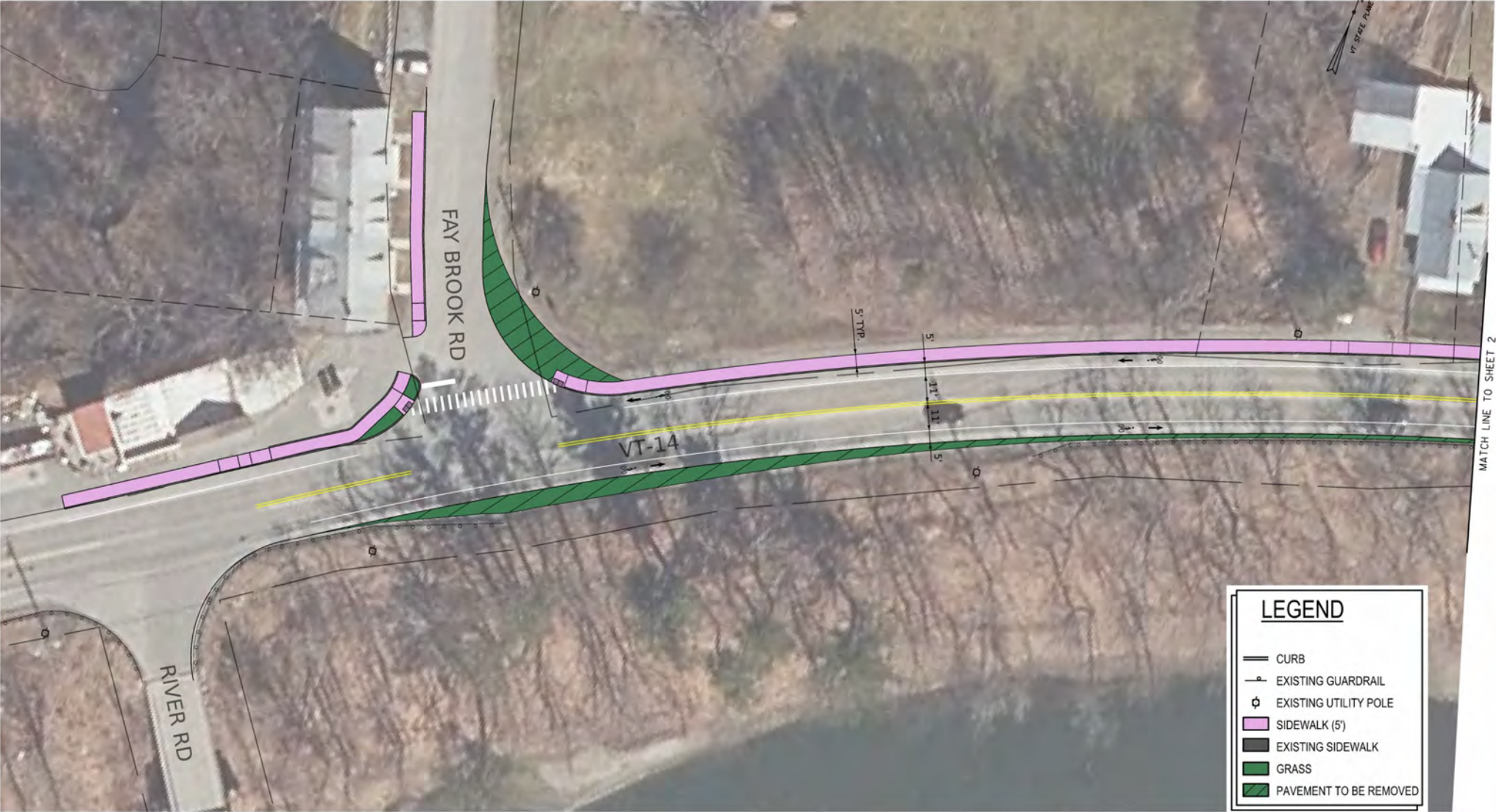
Alternative 1 – No Build

Alternative 2 – Sidewalk, Bike Shoulders,
3-way Stop

Alternative 3 – Sidewalk, Truck Aprons



ALTERNATIVE 2
SHARON TAP TA23(8) PEDESTRIAN ACCESSIBILITY SCOPING STUDY



ALTERNATIVE 2
SHARON TAP TA23(8) PEDESTRIAN ACCESSIBILITY SCOPING STUDY

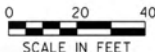


ALTERNATIVE 2
SHARON TAP TA23(8) PEDESTRIAN ACCESSIBILITY SCOPING STUDY



LEGEND

- CURB
- EXISTING GUARDRAIL
- EXISTING UTILITY POLE
- SIDEWALK (5')
- EXISTING SIDEWALK
- GRASS
- PAVEMENT TO BE REMOVED



ALTERNATIVE 2

SHARON TAP TA23(8) PEDESTRIAN ACCESSIBILITY SCOPING STUDY

LEGEND

CURB

EXISTING GUARDRAIL

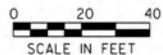
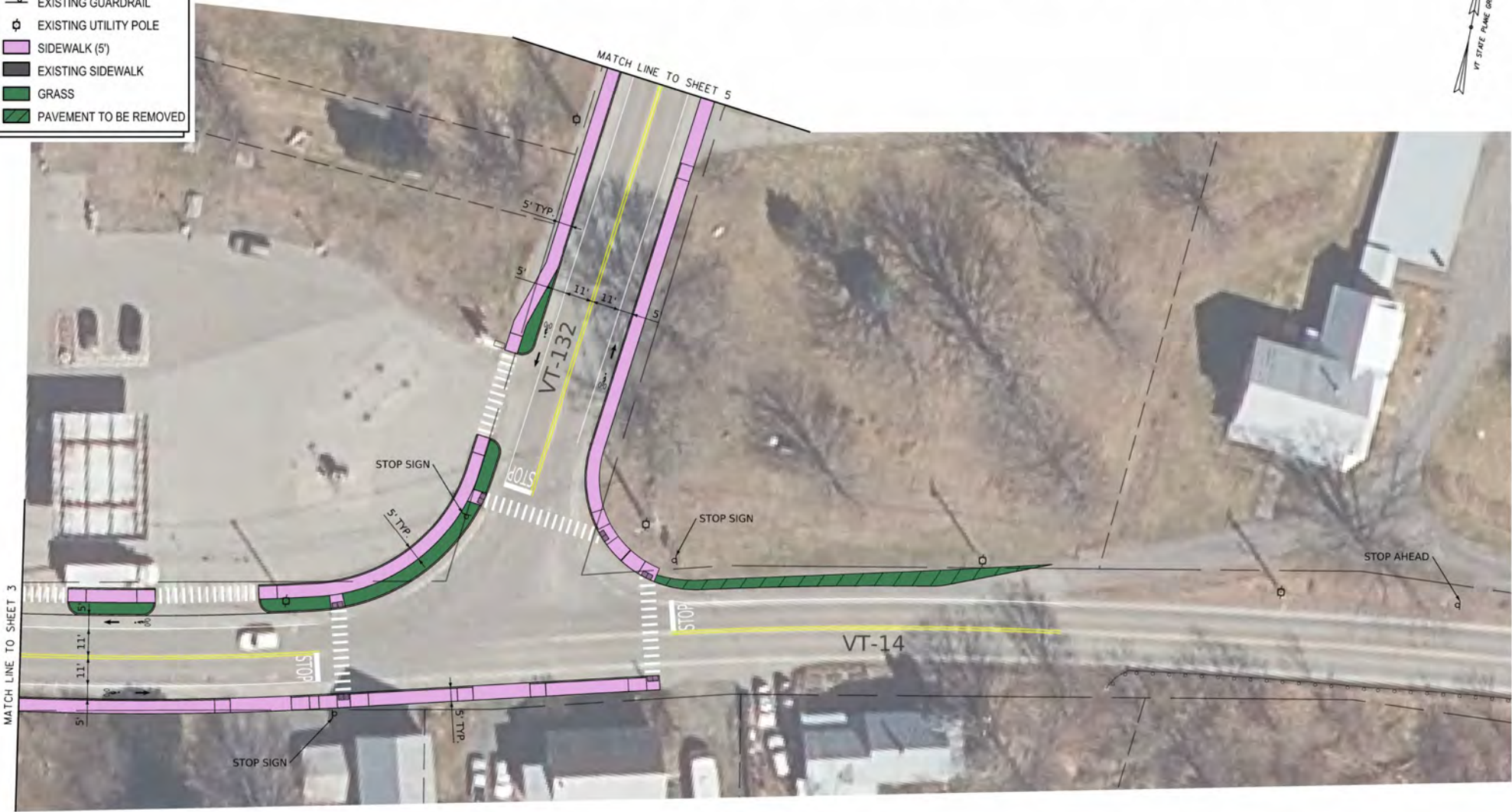
EXISTING UTILITY POLE

SIDEWALK (5')

EXISTING SIDEWALK

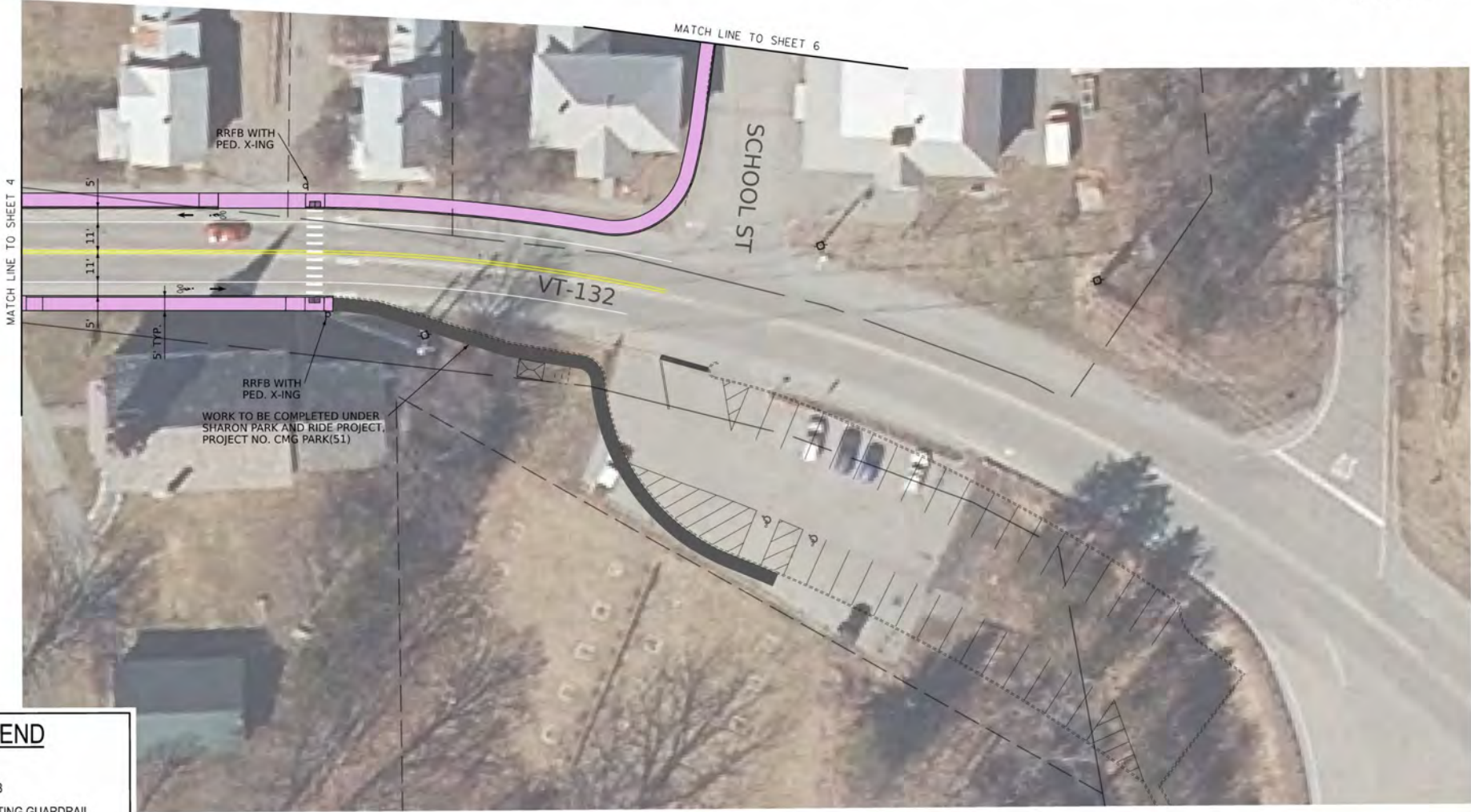
GRASS

PAVEMENT TO BE REMOVED



ALTERNATIVE 2

SHARON TAP TA23(8) PEDESTRIAN ACCESSIBILITY SCOPING STUDY



LEGEND

CURB

EXISTING GUARDRAIL

EXISTING UTILITY POLE

SIDEWALK (5')

EXISTING SIDEWALK

GRASS

PAVEMENT TO BE REMOVED



ALTERNATIVE 2
SHARON TAP TA23(8) PEDESTRIAN ACCESSIBILITY SCOPING STUDY



LEGEND

- CURB
- EXISTING GUARDRAIL
- EXISTING UTILITY POLE
- SIDEWALK (5')
- EXISTING SIDEWALK
- GRASS
- PAVEMENT TO BE REMOVED



ALTERNATIVE 3
SHARON TAP TA23(8) PEDESTRIAN ACCESSIBILITY SCOPING STUDY

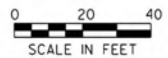


ALTERNATIVE 3
SHARON TAP TA23(8) PEDESTRIAN ACCESSIBILITY SCOPING STUDY




LEGEND

- CURB
- EXISTING GUARDRAIL
- EXISTING UTILITY POLE
- SIDEWALK (5')
- EXISTING SIDEWALK
- GRASS
- PAVEMENT TO BE REMOVED





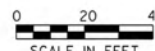
MATCH LINE TO SHEET 4

- ### LEGEND
-  CURB
 -  EXISTING GUARDRAIL
 -  EXISTING UTILITY POLE
 -  SIDEWALK (5')
 -  EXISTING SIDEWALK
 -  GRASS
 -  PAVEMENT TO BE REMOVED

VT-14

RRFB WITH
PED. X-ING

RRFB WITH
PED. X-ING



ALTERNATIVE 3
SHARON TAP TA23(8) PEDESTRIAN ACCESSIBILITY SCOPING STUDY

LEGEND

CURB

EXISTING GUARDRAIL

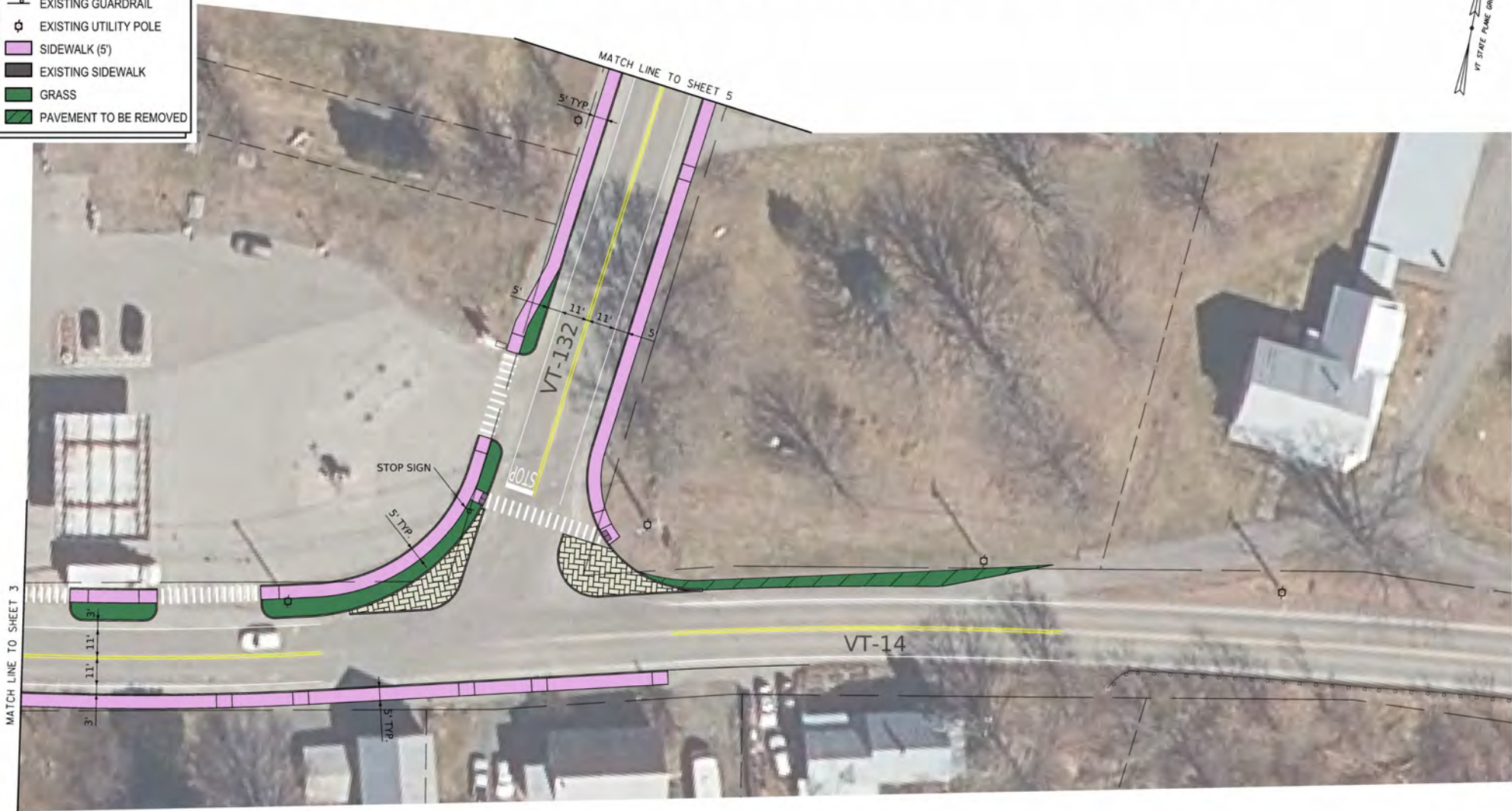
EXISTING UTILITY POLE

SIDEWALK (5')

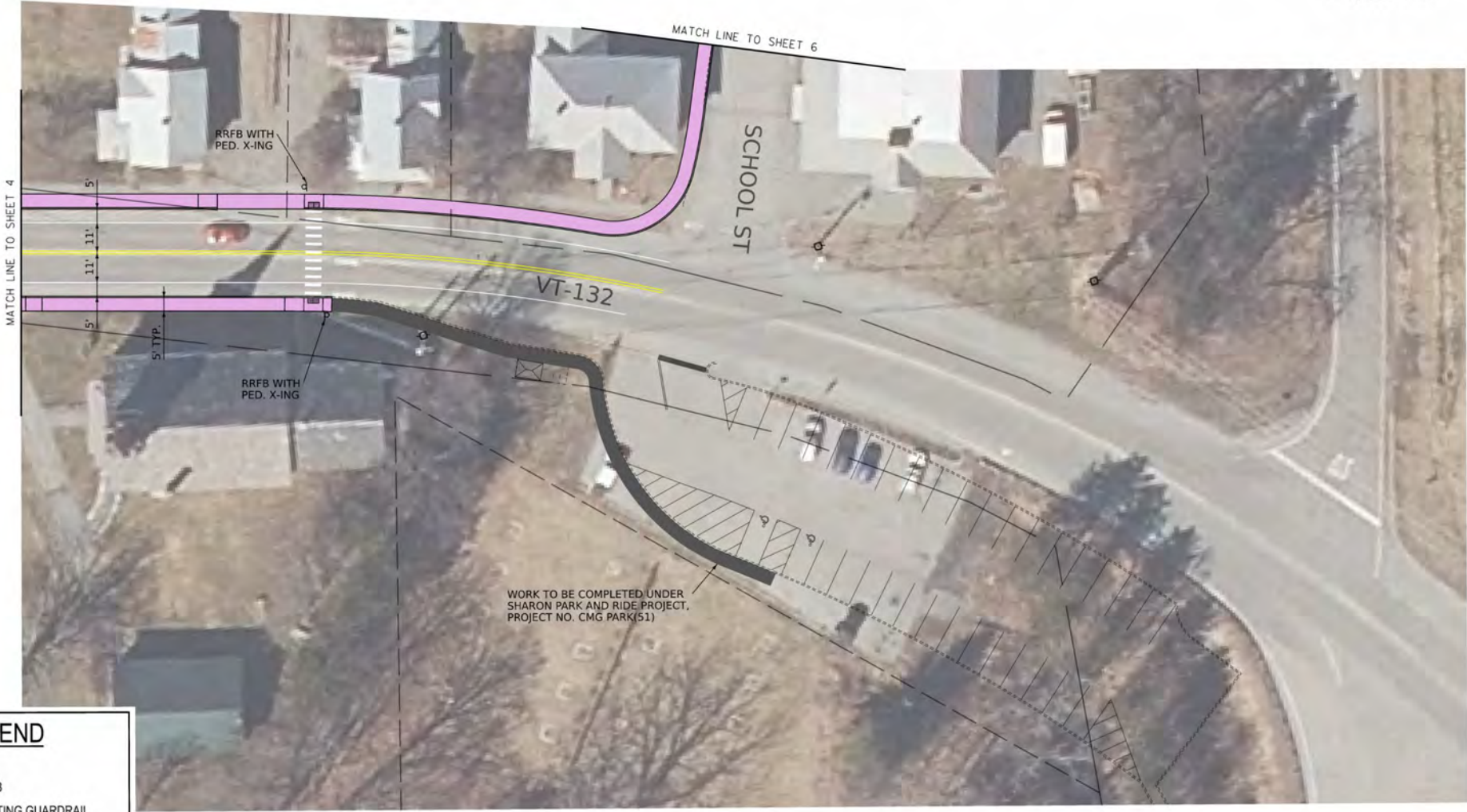
EXISTING SIDEWALK

GRASS

PAVEMENT TO BE REMOVED



ALTERNATIVE 3
SHARON TAP TA23(8) PEDESTRIAN ACCESSIBILITY SCOPING STUDY



LEGEND

- CURB
- EXISTING GUARDRAIL
- EXISTING UTILITY POLE
- SIDEWALK (5')
- EXISTING SIDEWALK
- GRASS
- PAVEMENT TO BE REMOVED



ALTERNATIVE 3
SHARON TAP TA23(8) PEDESTRIAN ACCESSIBILITY SCOPING STUDY



LEGEND

- CURB
- EXISTING GUARDRAIL
- EXISTING UTILITY POLE
- SIDEWALK (5')
- EXISTING SIDEWALK
- GRASS
- PAVEMENT TO BE REMOVED



Flashing Beacons and Signs

Flashing Beacon (RRFB) Cost

- Approximately \$20,000 per crosswalk
- Alternative: rebounding sign



Sidewalk Materials

Concrete

- Durable, stable
- More expensive than asphalt
- Can be colored and/or stamped
- Lasts up to 50 years
- Recommended material



Asphalt

- Costs less than concrete
- Can be stamped and coated
- Easier to repair
- Lasts up to 20 years



Evaluation Matrix - Sharon Village Sidewalk Scoping Study

	Alternative 1 No Build	Alternative 2 Asphalt Sidewalk	Alternative 2 Concrete Sidewalk	Alternative 3 Asphalt Sidewalk	Alternative 3 Concrete Sidewalk
Estimated Costs	\$0	\$1,200,000	\$1,900,000	\$1,400,000	\$2,000,000
Cost: Right-of-Way	None	Moderate	Moderate	Moderate	Moderate
Pedestrian Safety/Accessibility	No Change	Significant Improvement	Significant Improvement	Significant Improvement	Significant Improvement
Bike Safety/Accessibility	No Change	No Change	No Change	Moderate Improvement	Moderate Improvement
Impacts: Historic Properties	None	Minimal	Minimal	Minimal	Minimal
Impacts: Archeological	None	Potential	Potential	Potential	Potential
Impacts: Wetlands	None	None	None	None	None
Impacts: Utilities	None	Yes - Pole Relocation	Yes - Pole Relocation	Yes - Pole Relocation	Yes - Pole Relocation
Impacts: Parking	None	Moderate Reduction	Moderate Reduction	Moderate Reduction	Moderate Reduction

Next Steps

Project Definition

- Draft Scoping Report
- Select Preferred Alternative
 - Does not require Town to move forward beyond scoping process
- Final Scoping Report

Project Design & Construction

- Apply for design/construction grant for implementation





Questions and Comments

Thank You

Nicole Fox, PE

603.222.3480

nicole.fox@fando.com

www.fando.com

**FUSS &
O'NEILL**

Solve better. **Go further.**